

AGROPLUS F Keyline



DEUTZ-FAHR
AGROPLUS F Keyline 80.4





**AGROPLUS F KEYLINE.
GREAT EQUIPMENT
AT A SMALL PRICE.**



In the fruit growing sector too, the mechanisation of labour-intensive working procedures is the key to increasing productivity and making businesses more competitive.

With the Agropus F Keyline, DEUTZ-FAHR offers the ideal specialist tractor for fruit-growing businesses that are now looking for greater mechanisation. With a level of driving comfort and operating convenience that is exemplary in this category, a four-cylinder engine turbo and intercooler, a five-speed gearbox for maximum speed of up to 40 Km/h, a unique front axle and braking concept, four-wheel drive and 3050 kg rear lifting capacity, the Agropus F Keyline not only delivers a wide choice of equipment at a competitive price, but is the ideal tractor for any specialised operation.

AGROPLUS F Keyline	80.4
Cylinders / Displacement (cc)	4/4000
Max. power (@2000 rpm) (kW/HP)	55/75
Rear lifting capacity (kg)	3050
Weight (kg)	2854



DRIVER'S PLATFORM.
GET IN, DRIVE OFF
AND FEEL GOOD.



Driver seat and seating position extremely comfortable.



InfoCenter. All operating information at the glance.



All controls are clearly color coded...

When it comes to the driver's well being, there are no compromises. The following can therefore be said for all Agropius F Keyline models: Get in, drive off and feel good. For a long working day and more.

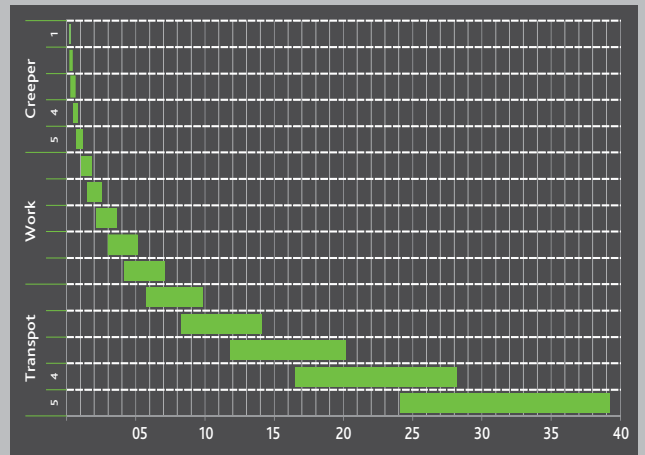
The driver's seat and seating position are extremely comfortable. All of the operating and driving data is put together clearly on the infocentre behind the steering wheel. The driver can constantly have an eye on everything. The controls are easy and right at hand, arranged logically according to how often they are used and clearly colour coded. This guarantees largely error-free operation, even when working hours surpass the normal levels.



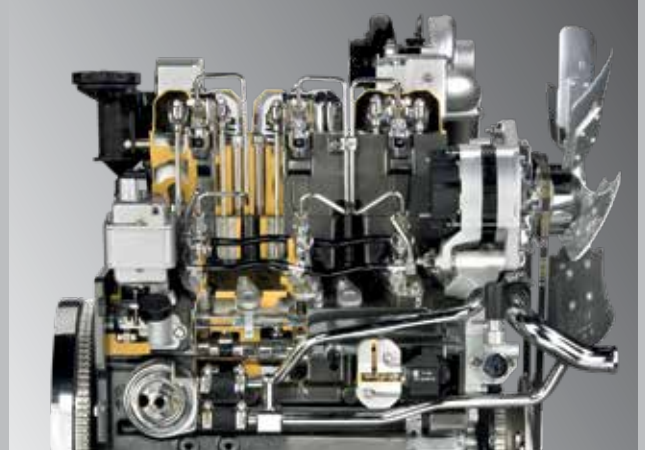
...and arranged conveniently around the driver seat.



**POWER, EFFICIENCY AND
SAFETY WITH 75 HP.**



Latest transmission technology in a five-speed gearbox with creeper.



Driven by high torque and economic SDF 1000 Tier3 engine.



Front axle. Rugged and durable both in the field and on the road.

The Agropius F Keyline is driven by the high-torque and economic SDF Series 1000 Tier3 engine with turbocharger and intercooler. With injection pressures of 1200 bar, they delivery maximum power at 2200 rpm. Maximum torque is reached at 1600 rpm with a torque increase of 19%.

For the efficient transfer of power, there is a mechanical reverse shuttle and a three-range, five-speed gearbox with creeper (15+15).

The Agropius F Keyline is equipped with a front axle that offers 1800 kg permitted total weight, differential with a 100 % lock, wet disc brakes and 55° steering lock angle.

The Agropius F Keyline is equipped with four-wheel brakes and separate brake valve, which smoothly distributes the braking power to the front and rear axle. The result is effective braking and maximum safety. The conventional parking brake is also part of the standard equipment. A hydraulic trailer brake is optionally available.

08-09
▶ LIFT
HYDRAULIC
PTO



REAR ATTACHMENT AREA.
EQUIPPED FOR EVERY JOB.



The perfect attachment area makes the tractor a highly efficient and universal work appliance (tool). DEUTZ-FAHR has been well known for many years for rear lifts with ultimate precision, simple controls and maximum efficiency. For the Agroplus F Keyline, a maximum rear lift capacity of 3,050kg is standard. The lifting control mechanism significantly increases precision when working implements.



PTO engagement for 540 or 540/540ECO.



Easy and precise to handle 3050 kg lifting capacity.



Equipped with up to 3 mechanical auxiliary valves.

The hydraulic pump supplies four mechanically controlled couplings at 42 L/min. For the steering, there is an independent pump at 18 L/min. A 2 speed PTO is standard on the 80.4, mechanically controlled using a dry clutch. The Agroplus F Keyline is ideally equipped for all jobs and is able to make a crucial contribution to the growth of your business.

Technical data		AGROPLUS F KEYLINE	
		80.4	
ENGINE			
Manufacturer			SDF
Model			1000.4
Emissions			Tier3
Cylinders/Displacement	n°/cc		4/4000
Pump-injector			Direct
Turbo			-
Turbo intercooler			●
Max. power (ECE R120)	kW/HP		55/75
Max. power engine speed	rpm		2200
Power at rated engine speed (ECE R120)	kW/HP		55/75
Rated speed	rpm		2200
Max. torque	Nm		285
Engine speed at maximum torque	rpm		1600
Torque rise	%		19
Mechanical engine control			●
Under-hood silencer with side exhaust			●
Exhaust gas after-treatment system			iEGR
Fuel tank capacity	litres		65
SHUTTLE			
Synchronised mechanical reverse shuttle			●
Mechanical clutch			●
MECHANICAL GEARBOX			
Number of speeds	n°		10+10
Number of gears	n°		5
Number of ranges	n°		2
Synchronised ratios			●
REAR PTO			
Dry clutch			●
Mechanical engagement			●
PTO 540			○
PTO 540/540ECO			●
Ground speed PTO			○
FRONT AND REAR AXLE			
Front axle, 4WD			●
100% lockable front/rear differentials			●
BRAKES			
Hydrostatic control			●
Mechanical parking brake			●
Trailer hydraulic braking valve			○
STEERING			
Hydrostatic steering with independent pump			●
Pump output		L/min	18
HITCH			
Mechanical rear hitch control			●
Rear lift capacity		kg	3050
Analogue instrumentation			●

Technical data

AGROPLUS F KEYLINE

80.4

HYDRAULIC SYSTEM

Open-centre hydraulic circuits		●
Pump output	L/min	42
Mechanical engagement		●
Auxiliary rear hydraulic distributors (std)	n° of ways	4
Auxiliary rear hydraulic distributors (opt)	n° of ways	6

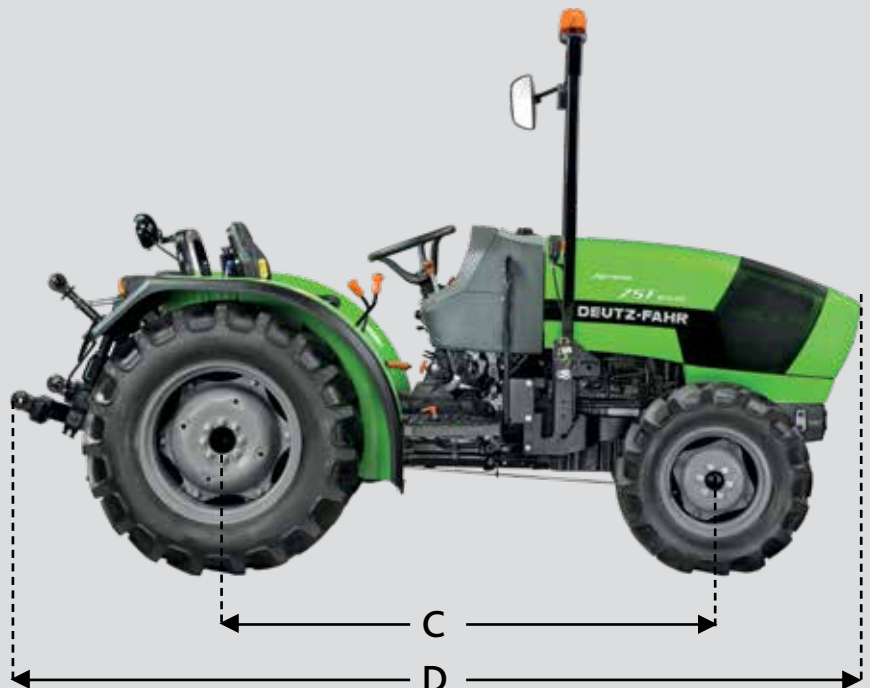
PLATFORM

Folding roll over protection frame (ROPS)		●
---	--	---

DIMENSIONS AND WEIGHTS

Standard front tyres		280/70 R16"
Standard rear tyres		360/70 R24"
Maximum front track (A)	mm	1462
Maximum rear track	mm	1466
Width between mudguards	mm	600
Width at mudguards (without extensions)	mm	1120
Total rear width	mm	1466
Total front width	mm	1462
Wheelbase (C)	mm	2126
Length (with rear linkage) (D)	mm	5373
Front track (min./max.)	mm	1166/1422
Rear track (min./max.)	mm	1091/1491
Max height at ROPS (B)	mm	2319
Height at steering wheel	mm	1430
Height at mudguards	mm	1211
Height at instrument cluster	mm	1387
Weight	kg	2600
Maximum load capacity	kg	4350

●: Standard ○: Optional -: Not available



Dealer


Marketing-Communication Service - Code 308.8564.3.4-3 - 05/16 ciagreen



P +64 7 902 2200 F +64 7 902 2201

W www.deutztractors.co.nz

86 Thames Street, Morrinsville, Waikato 3300

DEUTZ-FAHR is a brand of  SDF

